

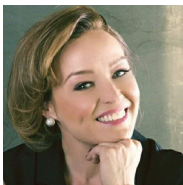
# Ritoch Powell Associates Demonstrates the Power of Partnership

RPA's participation fuels Hance Park's Noche en Blanco  
by Tyler Butler



## NOCHE EN BLANCO

The Hance Park Conservancy Sixth Annual "Noche en Blanco" multicultural community dinner in celebration of Hance Park (116 E. Moreland Street in Phoenix) will take place on Saturday, October 30, from 5:00 to 10:00 p.m. The event is produced by the Hance Park Conservancy in partnership with the City of Phoenix Parks and Recreation Department and is a night of community fun where guests are invited to dress in white costume cocktail attire, enjoy live entertainment and dine under the stars on the lush east lawn of Hance Park. [hanceparkconservancy.org](http://hanceparkconservancy.org)



Tyler Butler is the head of Corporate Responsibility for Aventiv Technologies, where she leads programs that positively impact society. She is also founder and principal of 11Eleven Consulting and is often cited as a subject-matter expert by *Forbes*, *SHRM*, *Entrepreneur*, *U.S. News and World Report* and more. [11elevenconsulting.com](http://11elevenconsulting.com)

► The hallmark of a great social impact partnership lies in the synergy between the cause and the company. When missions align, passions prevail and communities connect, powerful change can be possible. And this is most certainly the case between Ritoch Powell Associates and its support of the Hance Park Conservancy.

As an award-winning civil engineering and surveying firm that specializes in transportation, public works, renewable energy and private development projects, RPA has good reason to focus on the communities it serves. After all, this is not only the firm's purpose, but it's the firm's business. With a focus on arts, parks and public spaces, RPA is making its mark both economically and philanthropically.

Through its grassroots approach to corporate citizenship, the firm engages employees and activates their interests through local support of worthy causes. For RPA, this strategy serves to inspire hyper-local connections that enhance the communities where it operates. And for Ritoch Powell Associates, its direct connections with the community have been the foundation of its corporate culture and have inspired the credo its leaders and employees live by: "Doing well by doing good."

RPA believes there is more than just taking pride in the quality of its work; there's an aspiration to leave a lasting legacy that benefits the communities it works within. The firm enjoys a reputation for not only delivering services, but also for the value it places on both its people and its dependability. With its headquarters located in Phoenix's bustling downtown, its offices are located within reach of the light rail, university campuses, parks and arts venues, providing everyone in the firm ample ways to connect to their community. The Hance Park Conservancy is but one of these close and precious partnerships.



RPA's support of Hance Park has been a natural fit for the firm. Founded in 2010, HPC was formed to promote and advocate for the redevelopment of Margaret T. Hance Park in Downtown Phoenix. Its board of trustees is comprised of community, city and business leaders committed to the mission to activate and promote the creative use of this regional public space in support of a vibrant arts and cultural experience.

RPA's director of business development, Dorina Bustamante, has leveraged the firm's employee volunteer program to support her role on the Hance Park Conservancy Board of Trustees and as chair of Noche en Blanco Gala. Support like that provided by Bustamante has enabled tremendous growth of the Noche en Blanco event and the HPC organization. In turn, HPC has been instrumental in developing the Hance Park Master Plan and supports the fundraising effort of the Hance Park Partner Coalition to fund the implementation of the plan and foster collaborations in support of sustainability, community programming and advancement of the park.

"Community engagement and supporting causes that benefit all people, like parks and public spaces, are at the cornerstone of RPA's company culture, and part of the work we do as civil engineers," shares Karl Obergh, P.E., RPA founder. "The annual Noche en Blanco multi-cultural community dinner to benefit the Hance Park Conservancy is a perfect example of a special event raising awareness about an important organization supporting a great cause to preserve and enhance Hance Park."

Noche en Blanco takes place this year on Saturday, October 30, along with the dinner for Dignity to benefit the Central Arizona Shelter Services. This elegant and culturally diverse experience is inspired by a similar "dinner in white" that started in Paris more than 30 years ago and features long rows of tables draped in white linens, with strings of sparkling lights and stars overhead.

Arizona's version similarly features guests clad in white garb along with extravagantly decorated tables and expertly created picnic baskets. One hundred percent of the proceeds from the event will benefit the Hance Park Conservancy. Funds raised will be dedicated to the sustainability and future of Hance Park, ensuring its longevity so it can be a treasured space for generations to come. ■

